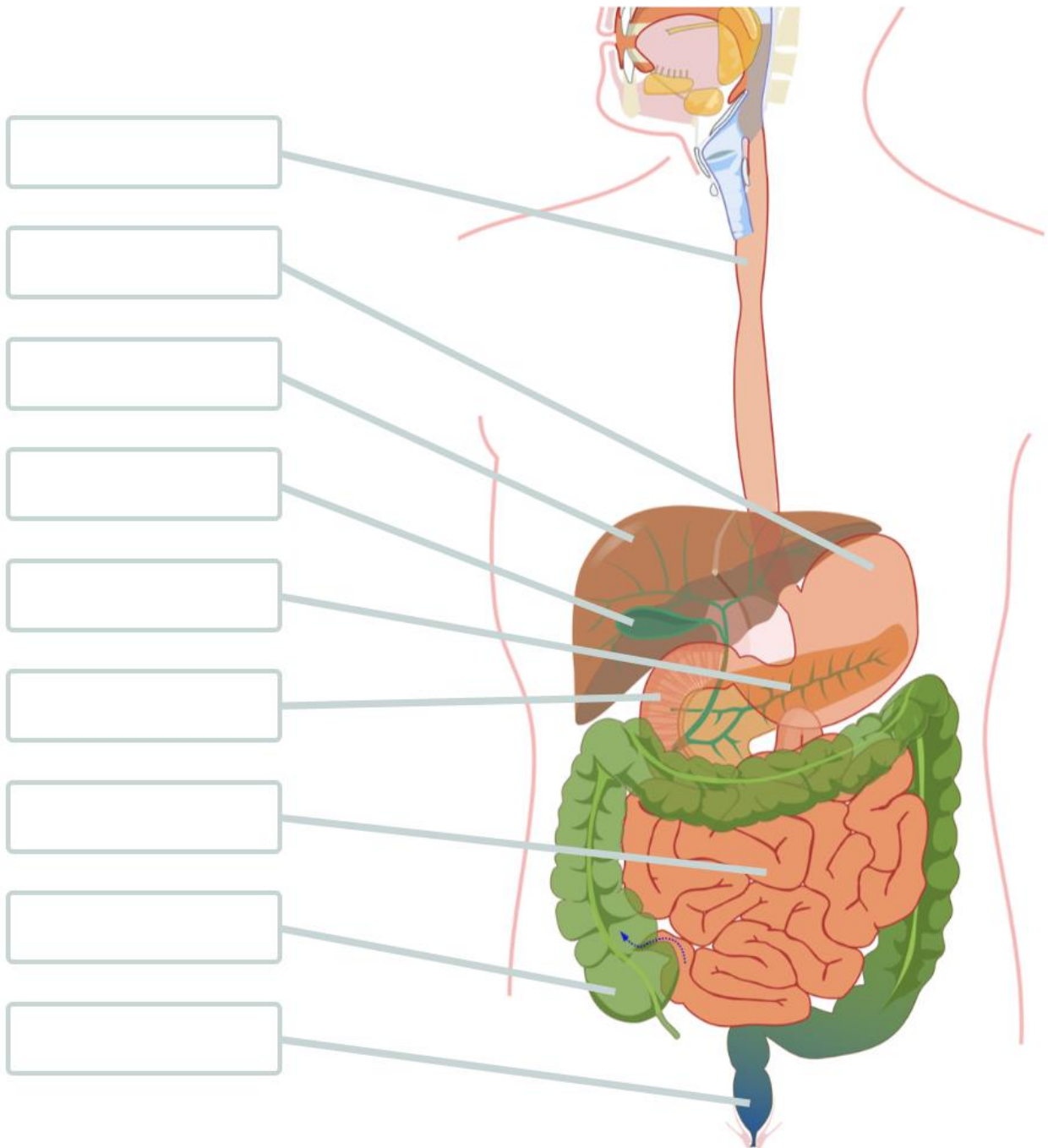


Labelling the human digestive system



Labels	Description
liver	Organ that processes nutrients and filters toxins from blood, produces bile and many other functions.
gall bladder	Stores bile produced by the liver and releases it into the duodenum.
pancreas	Organ that secretes digestive enzymes and produces hormones such as insulin.
large intestine	Muscular tube that absorbs excess water.
rectum	Stores indigestible food matter for disposal.
oesophagus	Muscular tube that contracts to move food from the mouth to the stomach.
stomach	Muscular J-shaped sac that churns food while it is mixed with acid and enzymes.
duodenum	Mixes bile and pancreatic enzymes with gastric juice from the stomach.
small intestine	A long tube that is lined with tiny finger-like structures that maximise the absorption of nutrients.